

PROSPECTUS

Reconnect with
God's purpose &
design for your life



www.thefarm.academy

Join with students from around the world for
a year long journey of personal renewal,
accelerated growth and *fulfillment of purpose*



The Farm Global School of Missions is a one-year boot camp designed to train and equip you to live out your faith and calling in the contemporary world.

Take the time out to refresh, refocus and reconnect with the things that matters the most in your life - *your relationship with God, your family and other critical relationships and your life's mission.*

WEEKLY ONLINE CLASSES

DAILY DEVOTIONALS

WEEKEND SEMINARS

BOOK / MOVIE REVIEWS

STUDENT PROJECTS

GLOBAL MISSIONS

SOCIAL INITIATIVES

MARCH
OR SEPT
INTAKE



Refresh.
Refocus.
Reconnect.

Invest the next one year in a journey that is set to challenge your outlook to life and set you on course for a purposeful and a more fulfilling life.

Imagine taking the time out for reflection, leadership development, mentorship, prayer and cultural engagement within a global transformational community.

Get ready for a journey that will open up a whole new world of growth, adventure and effective living to you.

Who Should Apply

- Anyone facing the questions of life purpose and meaning or seeking answers concerning their identity and calling in life.
- Anyone who is in a season of transition and desires to take time out for a season of reflection before any major life decisions.
- Leaders, entrepreneurs, professionals, change makers, visionaries of all ages and disciplines who desire to take time out to reflect and train towards living out their faith and calling in the contemporary world;
- Every applicant must be willing to serve alongside peers in a community environment.
- All applicants should be committed to following Christ, eager to learn and internalize what that means in everyday culture.



Our Mission

At *The Farm GSOM* we train and equip the student to reconnect with God's purpose and design for their lives. This mission is hinged on our seven point core values below.

Raising a new generation of visionary leaders, entrepreneurs, educators, artists and change-makers from every sector of society spearheading a global transformation agenda.

CHRIST-LIKE CULTURE

Growing in Godly character, creativity and competence

HIGHER ORDER THINKING

Elevating the mind above culture and conformity

MISSION DRIVEN MINDSET

A commitment to live out your faith and calling in the contemporary world.

LIFE FITNESS

Spiritual, mental, emotional, physical, social, & financial health, and wellness of being

HEART FOR HUMANITY

Empathy towards humanity and the state of the world

IDENTITY INTEGRATION

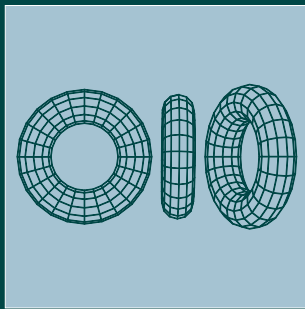
Aligning our pursuits with God's purpose and design

CONNECTION TO COMMUNITY

Healing and restoring right relationships and accountability

Units of Study

During the one year program at *The Farm*, we will cover a total of 20 groundbreaking units spanning across 92 sessions. The units cover a wide range of subjects such as spiritual formation, discovery of identity, the pursuit of purpose and calling, self-leadership, mental, emotional, physical and financial health.



GSOM 100

REALITY, PERCEPTION & TRUTH

In the quest for truth, we explore and question the basic assumptions and hardwired beliefs that shape our realities asking questions that include What if everything we have believed about life and existence is wrong? What if the reality we know is merely an illusion? Buckle up because this unit will challenge what you have believed about reality and truth, help you to overcome confirmation bias and train you to find objective truth for yourself.



GSOM 101

LIFE NAVIGATION

If each day represents a step on your life's trajectory, then each step either brings you back on course or takes you further off course. Navigation is defined as the process or activity of accurately ascertaining one's position and planning and following a route. Building up on the learnings from the previous unit, this unit helps you to objectively evaluate where you are, how you got there, where you are going and how to get there.

GSOM 102

DECONSTRUCTING HISTORY

“A people who do not learn from their history are condemned to repeat it” – George Santayana. The big question under study here is How does our past shape our present and further determine our future? In this unit we explore the value of hindsight and study how it can shape our insight and give us a better foresight. We gain command over our personal history by revisiting it, pulling it apart and putting the puzzle pieces together so that it serves our God given destiny and promise.



GSOM 103

LANGUAGE, MIND & CULTURE

“When language dies, a way of understanding the world dies with it -” George Steiner. Language is a carrier of concept. We use language everyday to get our messages across. But when language is compromised, misconception thrives. In this unit we explore the nature of language, its purpose, patterns, principles and the power it has to shape both mind and culture.



GSOM 200

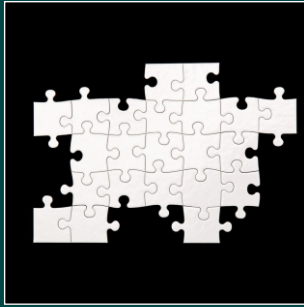
YOUR CONCEPT OF GOD

Can I know God personally, as one would a friend? What if God has been misrepresented to you? What if God is not who you think He is? And how does your concept of God impact your self concept? In this unit we continue to tackle the difficult questions around who God is including how to justify his existence in a world full of pain, injustice, poverty, war, disease, natural disasters, racism, drug abuse and other challenges.



GSOM 201

LIFE INTEGRATION



Imagine life like a puzzle, many different pieces that come together to make the whole - one coherent whole. Now imagine that puzzle scattered all over the room, pieces all over the place, out of place and some missing. In this unit, we seek to identify the missing and misplaced pieces of life's puzzle with a view to reintegrate them back together according to God's purpose and design.

GSOM 202

PURPOSE & DESIGN



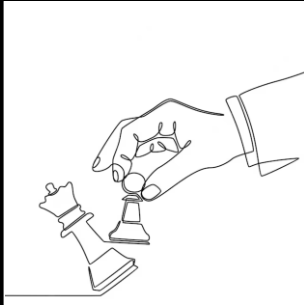
Do you want to know what God's purpose for your life? How can you live out the call of God upon your life? How does your perspective on faith and calling shape your everyday choices? The terms purpose, calling, gifting, destiny, assignment and mission have often been misunderstood, some even using them interchangeably. In this unit, we study these concepts as we address the issue of life's meaning.

GSOM 203

FROM CHAOS TO DESIGN



What does it mean to live your life by God's design? How does true life change happen? Why do we struggle with behavior change?. In this unit, we explore what it takes to effect a clear personal and community lifestyle change. We tout the value of training, emphasizing that training forces discipline and discipline leads to habits, habits model consistency, consistency shapes culture, and culture leads to growth.



GSOM 300

SPIRITUAL INTELLIGENCE

The world exists in four dimensions of time and space, but there is a fifth dimension that remains lost to us - the spirit dimension. Though unfamiliar to most of humanity, this dimension exerts a great deal of influence over the natural world. This unit aims to empower the student to understand, master and harness the principles, processes, purposes and persons of the spirit dimension.



GSOM 301

THEOLOGY OF MONEY

Money plays a critical role in our lives and in our world. But beyond acting as a medium of exchange, is there more to money? How does your concept of money affect your world view? In this class, we rediscover and demystify the role of money. We explore a Biblical world view on wealth and financial health. This is a foundational class on the principles of God's kingdom economics and an introduction to the concept of true financial freedom .

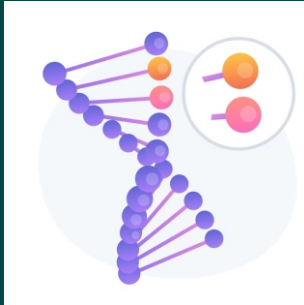


GSOM 302

REDEEMING RELATIONSHIPS

What was God's original intent for human relationships? How can we shift from a random approach to relationships to a more God-led and purpose driven one? What is God's agenda for every human relationship? In this unit, we travel through God's word to uncover God's design and redeeming plan for relationships in each stage of life and role.

GSOM 303



A NEW KIND OF MAN

There is a new race of men walking the earth. It's a new species of beings, ordinary human beings who have gone through a 'rebirth' to evolve into supernatural, 'divine' beings. Because of this their entire reality is altered, their world view is radical. There is hope for our world because of the emergence of this 'new kind of man'.

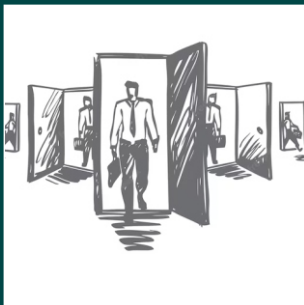
GSOM 400



CULTURAL TRANSFORMATION

What will it take to achieve the kind of life change that we desire? In this unit, we explore the fact that 'there can be no life change without culture change'. We delve into cultural colonialism, a concept that states that 'a culture with a stronger mind influences and rules over a culture with a weak mind'. We identify patterns of mental slavery in society and uncover what it will take to develop and gain mastery over the mind and consequently over life direction.

GSOM 401



THEOLOGY OF WORK

What is the relevance of faith in our places of work, career and business. In this unit, we study the biblical principle of work based on the book of Genesis 1 and 2. We study what it means to '*be fruitful, multiply, replenish the earth, subdue and have dominion*', a concept that we call, God's creation mandate. This unit will transform the way you view work and so repositioning you to fulfill God's purpose and calling for your life in the contemporary world.

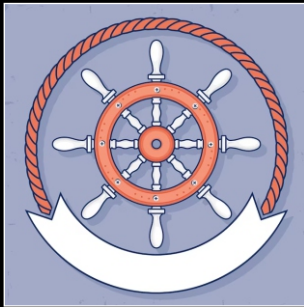
GSOM 402



A KINGDOM OUT OF THIS WORLD

What would the world look like under the government of God? This unit explores the perspectives of a God centered society. We imagine a world where the society is back to God's original design. National government stems out of family government, and family government begins with self government. We discover the biblical patterns of leadership and God's plan for the new testament church as His agency on earth.

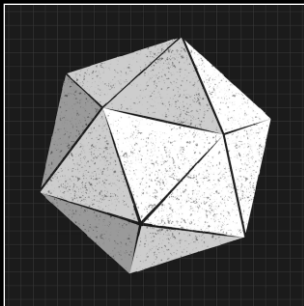
GSOM 403



THE MASTER & THE MISSION

What is your life's mission? In this unit, we explore this all important question. As the saying goes, 'if you don't stand for something, you fall for anything'. Understanding that God placed each of us on earth for a purpose, we engage in individual and group activities to help each student gain clarity their specific assignment. Beyond discovery, the student is then equipped with the necessary mind-sets, tools and techniques to pursue and fulfill the mission.

GSOM 500



TECHNOLOGIES OF THE WORLD TO COME

When God's world collides with ours, we are overtaken by a higher reality, a transcendent civilization, a meta dimension – experiencing divine principles and forces that transcend human imagination and limitations. In this unit, we discover God's limitless technology and gain capacities to harness them for the redemption of our world.

GSOM 501



DIMENSIONS OF TIME

Ever wondered the meaning of time? Ever sought to understand the dimensions beyond time and space? What realities lie beyond our own? In this ground breaking unit, we contrast between masters of time and slaves of time. We seek to uncover the Biblical concept of redeeming time. The principle learned in this class will empower the student to open portals into the spirit dimension, gaining capacities to master and to bend time.

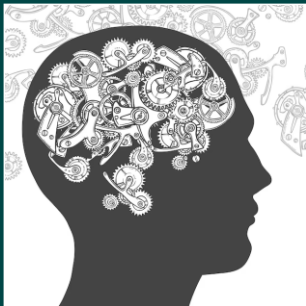
GSOM 502



LIFE NUMERICS

The Psalmist made a passionate prayer in Psalms Chapter 90 Verse 12 asking God to 'teach us to number our days'. So how exactly do we number the days? This unit delves into the fascinating world of numbers and the power that they have to shape our perception of reality. We explore the theology and psychology behind the weights, measures and standards that shape how we see the world and therefore how we see ourselves.

GSOM 503

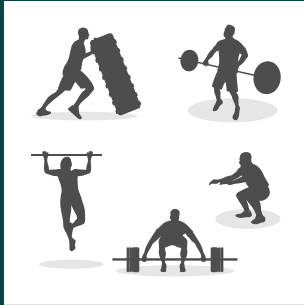


MIND ENGINEERING

The mind is the gateway to the heart and the heart is the center of life. In this unit we study the mechanics of the mind. We look at the principles and forces of culture shaping thought patterns and priming the mind for conformity. We study the biblical principle of image replication and how to rewire the mind towards freedom and a mastery over life.

GSOM 600

LIFE FITNESS



What will it take to fulfill God's purpose and design for your life? What will it take to break through life barriers and to step into the fullness of what God created you to become? What will it take to translate your God-given vision into reality? It takes a lifestyle of sacrifice, inner strength and commitment to training, life-long learning, and unlearning. In this life-readiness unit, we engage in exercises to help you develop mental, emotional, physical, financial and social fitness



The Program

Program

The 12 month program at The Farm engages the student on a journey of learning and unlearning using the following methodology.

Lectures (Two Online Classes Per Week)

Weekend Seminars (Quarterly In-Person Events)

Class Assignments

Group Discussions

Book & Movie Reviews

Student Research & Projects

Credits

Class Credits (32)

Core Units 24 Credits

Electives 4 Credits

Assignments 4 Credits

Experience Credits (18)

Weekend Seminars 4 Credits

Mission/Community Service 4 Credits

The Gardening Project - 2 Credits

SKIP Project - 8 Credits

(Planning, Experience, Masterclass, Book Publishing)

Total Credits 50

Minimum Requirement for Graduation 40 Credits

Electives

Electives are needed to fill out the minimum number of credits needed for graduation. Electives may be taken in any department or field to supplement the student's interests.

Identity & Calling

GSOM 600 Spiritual Formation

GSOM 601 Called To The Marketplace

GSOM 602 How To Create An Effective Life Plan

GSOM 603 Clarifying Your Calling

GSOM 604 How To Raise Funds For Your Vision

GSOM 605 Breakthrough Financial Patterns

Media & Arts

GSOM 700 The Ministry & Business Of Art

Business & Finance

GSOM 800 How To Build A Kingdom Enterprise

GSOM 801 Kingdom Wealth Creation Primer

GSOM 802 God's Stake In Technology

Family & Society

GSOM 900 Building an Effective Family Ministry

GSOM 901 The Divine Path Into Marriage

GSOM 902 Marriage By Gods Design

GSOM 903 Parenting By Gods Design

GSOM 904 Healing for The Whole Person

GSOM 905 Transforming Society Through Education



Weekend Seminars

Immersion Weekend

This weekend is an experience designed to immerse the student into God's Kingdom culture. It has three main sessions, the conversation session, an individual session of introspection and the group session known as, *Prophetic Circle*.

Game Changer Weekend

Through a series of activities, games and conversations, the student is challenged to challenge, examine and test their decision making process. We engage in personal reflection, game play and strategic brainstorming.

Art of Life Weekend

This seminar employs a workshop model using *the life design toolkit*, an activity centered experience designed to help develop the systems to implement a life plan and effectively manage time, money and relationships.

Mission Critical Weekend

This seminar is designed to prepare the kingdom operative for a mission of invasion into their specific world of calling. The training is patterned after the *Survive Evade Resist & Escape (SERE) Training*.

Fees & Payment Information

Admission Fee	KES 2 000 / USD 20
Tuition Fee	KES 48 000 / USD 480
Graduation Fee	KES 4 000 / USD 40
Total	KES 54 000 / USD 540

PAYMENT OPTIONS

Tuition fee payment options as follows

1. One Time Payment of KES 48 000 / USD 480
2. Quarterly Payments KES 12 000 / USD 120
3. Monthly Payment of KES 4 000 / USD 40

NB/ The graduation is due on the first day of the 7th month of the school session

PAYMENT DETAILS

Mpesa

Till Number 238 532 (Robust & Replica Syndicate)

Bank

Bank: Absa Bank, Queensway Branch

Account Name: Robust & Replica Syndicate

Account Number: 2049723353

Refund Policy

No refunds are given after the end of the second week of the academic year. If a student submits an official withdrawal prior to the end of the second week of classes, the student will be refunded tuition paid minus USD 40/KES4000. *The registration fee is a non refundable deposit.* Please note: applicable tuition refunds are only available in instances of official withdrawal. Unofficial withdrawals may result in unpaid balances for which the student is responsible. After the second week of classes for the academic year, no refunds are given. If a student is expelled due to violation of the policies stated in our Standards of Conduct and Honorable Life Covenant, then no refund shall be due.

*Amounts subject to current dollar exchange rates

**The Farm GSOM* accounts are managed by Robust & Replica Syndicate

Next Steps - Advanced Schools

After completing *The Farm GSOM Seed Program* (as described in this prospectus and below), The student can apply to advance to the second and third year of the experience.

Year 1 - Seed Program

The Seed Program is the foundational program at *The Farm*. It is a one year transformational experience that takes the students through 21 units covering Biblical foundations, character development and kingdom leadership training. The goal of *The Seed* program is to help the student reconnect with God's purpose and design.

Year 2 - Ascend Program

The Farm Global School of Missions year two focuses on helping the student discover, master and build character and competencies for specific areas of calling. *The Ascend* program covers 14 advanced units as well as core studies in Kingdom Business Administration & Economics, Family Ministries, Media & Arts, Politics & Government, Education, and World Management. These level prepares the student for mission work with a very specialized focus.

Year 3 - Move Program

The Move program focuses on the leadership dimension of the call. it covers 14 units designed to prepare the student for leadership in the contemporary world within the context of their individual calling and gifting. It is an intensive experience that culminates in the four months internship program to immerse the student in the real world experience of modern day mission work.

Advanced Schools

School of Family Ministries

School of Reforming Arts

School of Spiritual Formation

School of Kingdom Business & Economics



**BOLD.
MISSIONAL.
DISRUPTIVE.**

For more information or to sign up for either September or March intake, please get in touch on the contacts provided.



+254 728 683 361



hello@thefarm.academy



www.thefarm.academy